

(12) **United States Patent**
Jobson et al.

(10) **Patent No.:** **US 8,111,943 B2**
(45) **Date of Patent:** **Feb. 7, 2012**

(54) **SMART IMAGE ENHANCEMENT PROCESS**

(75) Inventors: **Daniel J. Jobson**, Newport News, VA (US); **Zia-ur Rahman**, Williamsburg, VA (US); **Glenn A. Woodell**, Newport News, VA (US)

(73) Assignee: **The United States of America as represented by the Administrator of the National Aeronautics and Space Administration**, Washington, DC (US)

7,136,508 B2 11/2006 Asano et al.
7,170,645 B2 1/2007 Kim et al.
7,187,808 B2 3/2007 Cho et al.
7,209,183 B2 4/2007 Kim
7,283,683 B1 10/2007 Nakamura et al.
7,308,154 B1 12/2007 Ferrante et al.
7,315,656 B2 1/2008 Von Thal et al.
7,352,410 B2 4/2008 Chou
2004/0136605 A1 7/2004 Seger et al.
2005/0123211 A1 6/2005 Wong et al.

(Continued)

OTHER PUBLICATIONS

(*) Notice: Subject to any disclaimer, the term of this patent is extended or adjusted under 35 U.S.C. 154(b) by 517 days.

Narasimhan et al, "Contrast Restoration of Weather Degraded Images", IEEE 2003.*

(Continued)

(21) Appl. No.: **12/423,907**

(22) Filed: **Apr. 15, 2009**

(65) **Prior Publication Data**

US 2010/0266214 A1 Oct. 21, 2010

(51) **Int. Cl.**
G06K 9/40 (2006.01)

(52) **U.S. Cl.** **382/274; 382/275; 382/206; 382/224; 382/260; 382/283**

(58) **Field of Classification Search** 382/274, 382/275, 206, 224, 260, 283
See application file for complete search history.

(56) **References Cited**

U.S. PATENT DOCUMENTS

5,287,176 A 2/1994 Stolle et al.
5,841,911 A * 11/1998 Kopeika et al. 382/254
5,991,456 A 11/1999 Rahman et al.
6,205,257 B1 3/2001 Eschbach
6,842,543 B2 1/2005 Woodell et al.
6,843,125 B2 1/2005 Peterson et al.
6,909,815 B2 * 6/2005 Bernstein et al. 382/274
7,013,025 B2 3/2006 Hiramatsu
7,099,520 B2 8/2006 Ishiguro

Primary Examiner — Wesley Tucker

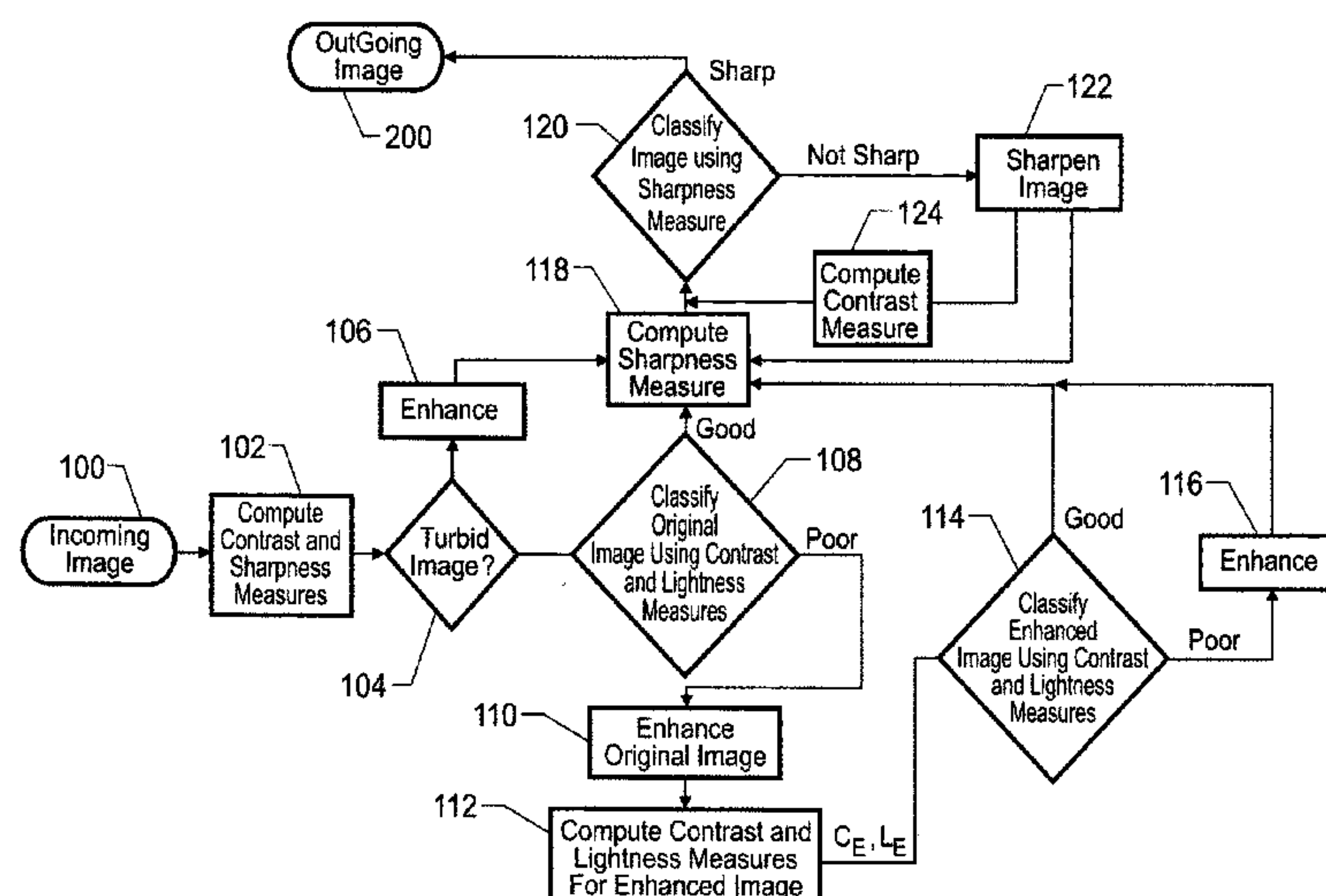
Assistant Examiner — Mark Roz

(74) *Attorney, Agent, or Firm* — Andrea Z. Warmbier; Robin W. Edwards

(57) **ABSTRACT**

Contrast and lightness measures are used to first classify the image as being one of non-turbid and turbid. If turbid, the original image is enhanced to generate a first enhanced image. If non-turbid, the original image is classified in terms of a merged contrast/lightness score based on the contrast and lightness measures. The non-turbid image is enhanced to generate a second enhanced image when a poor contrast/lightness score is associated therewith. When the second enhanced image has a poor contrast/lightness score associated therewith, this image is enhanced to generate a third enhanced image. A sharpness measure is computed for one image that is selected from (i) the non-turbid image, (ii) the first enhanced image, (iii) the second enhanced image when a good contrast/lightness score is associated therewith, and (iv) the third enhanced image. If the selected image is not-sharp, it is sharpened to generate a sharpened image. The final image is selected from the selected image and the sharpened image.

9 Claims, 3 Drawing Sheets



U.S. PATENT DOCUMENTS

2005/0163393 A1 7/2005 Asari
2006/0092474 A1 5/2006 Ramsay et al.
2006/0126959 A1 6/2006 Padwick et al.
2006/0216959 A1 6/2006 Padwick et al.
2006/0245647 A1 11/2006 Lee
2006/0268180 A1 11/2006 Chou
2007/0009167 A1 1/2007 Dance et al.
2007/0172121 A1 * 7/2007 Masaki 382/170
2007/0172145 A1 7/2007 Altunbasak et al.
2007/0201763 A1 8/2007 Kuwata et al.
2007/0217707 A1 9/2007 Lin et al.

2007/0223814 A1 9/2007 Chang et al.
2007/0286522 A1 12/2007 Moessle
2008/0044083 A1 2/2008 Bilcu et al.
2008/0050031 A1 2/2008 Itoh et al.

OTHER PUBLICATIONS

Narasimhan et al, “Vision and the Atmosphere”, IJCV 2002.*
Mahiny et al, “A Comparison of Four Common Atmospheric Cor-
rection Methods”, Photogrammetric Engineering and Remote Sens-
ing, 2007.*

* cited by examiner

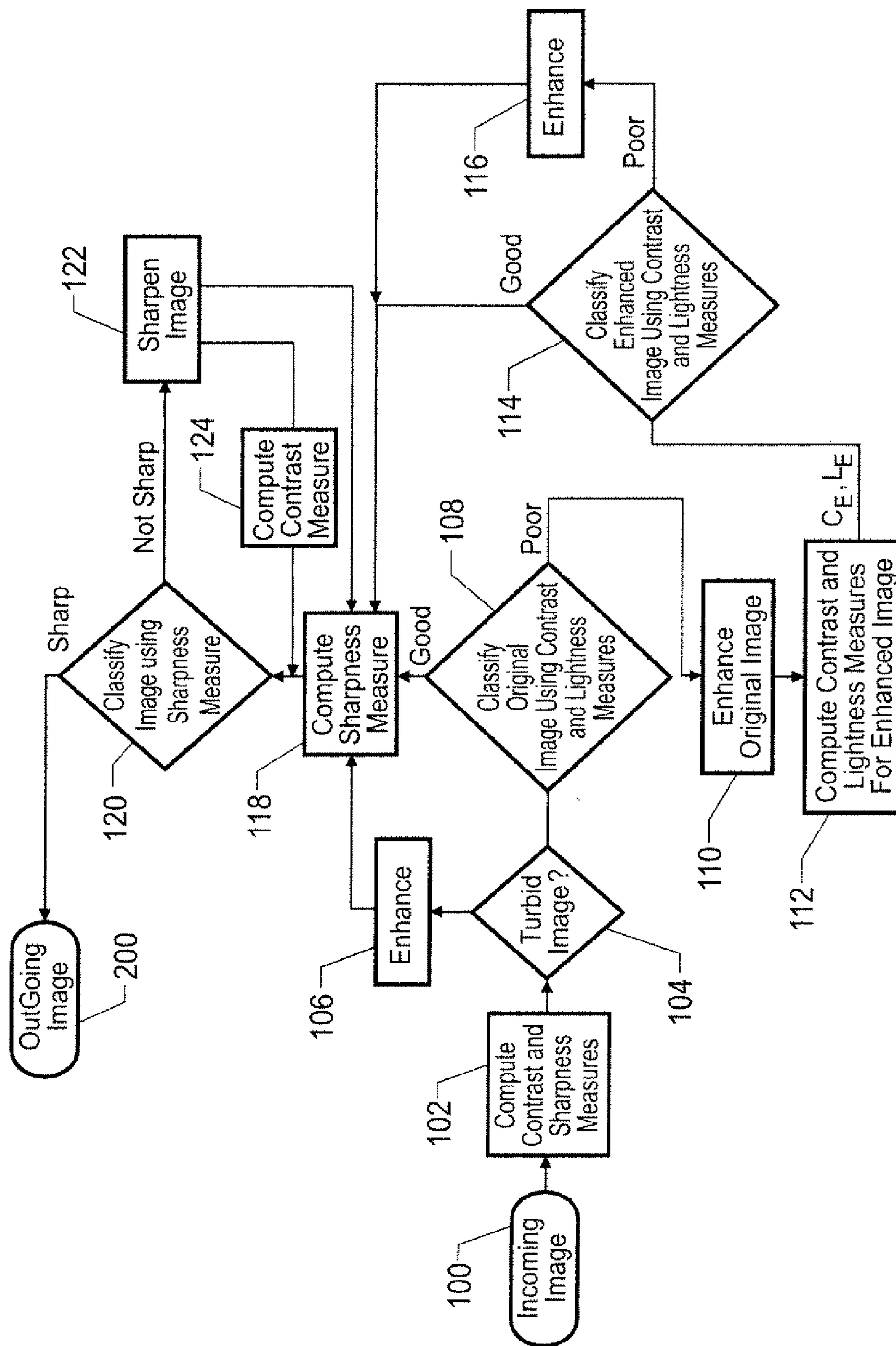


FIG. 1

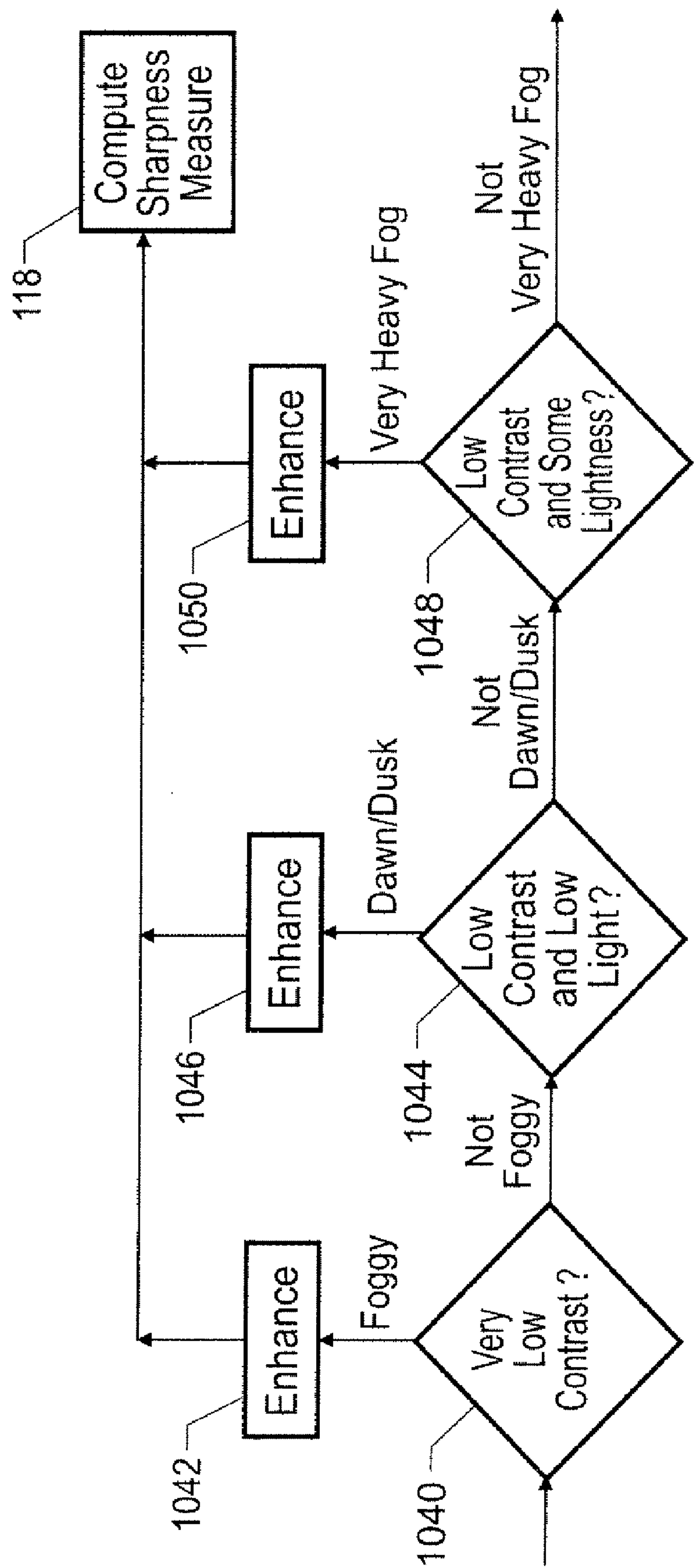


FIG. 2

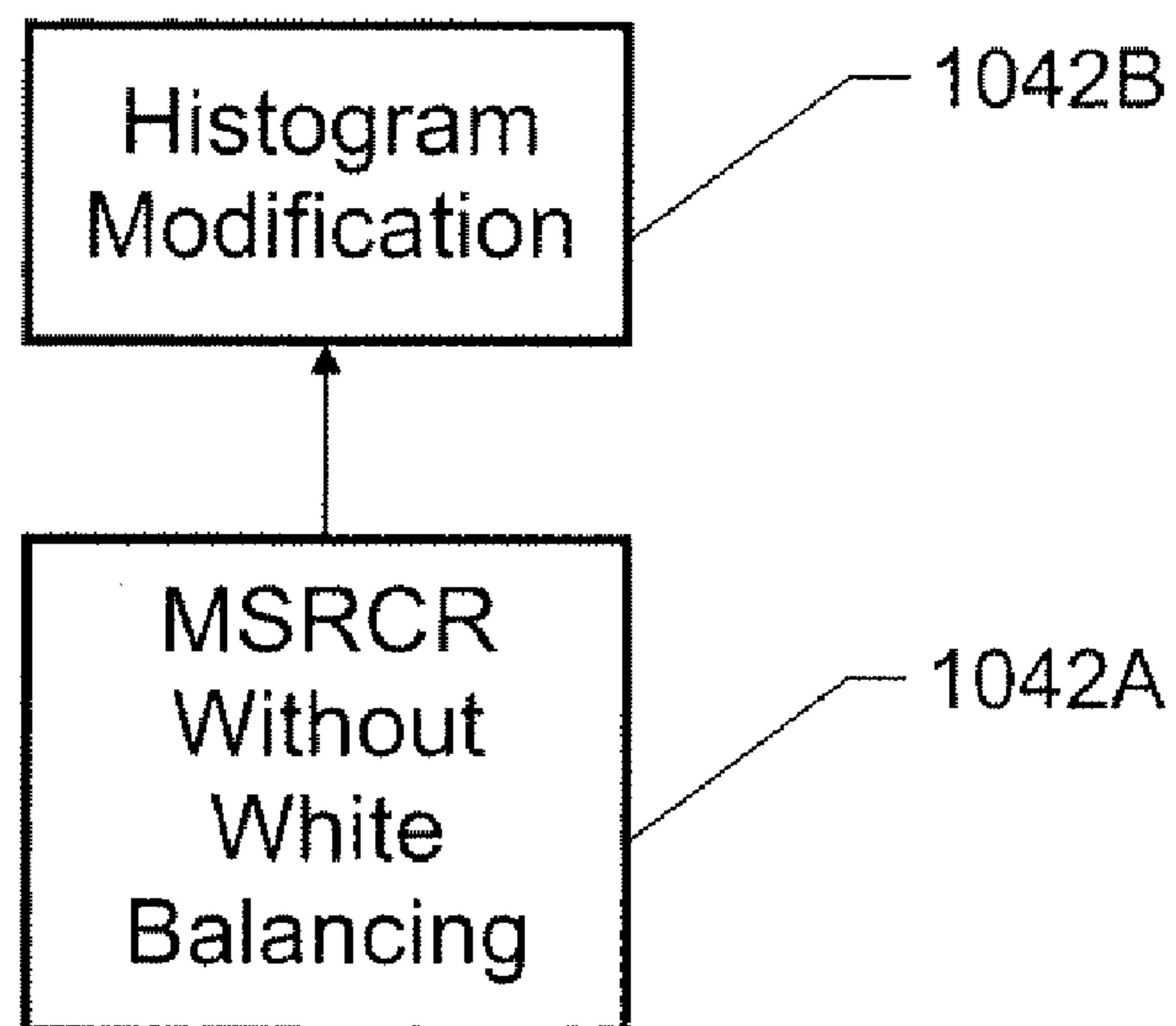


FIG. 3

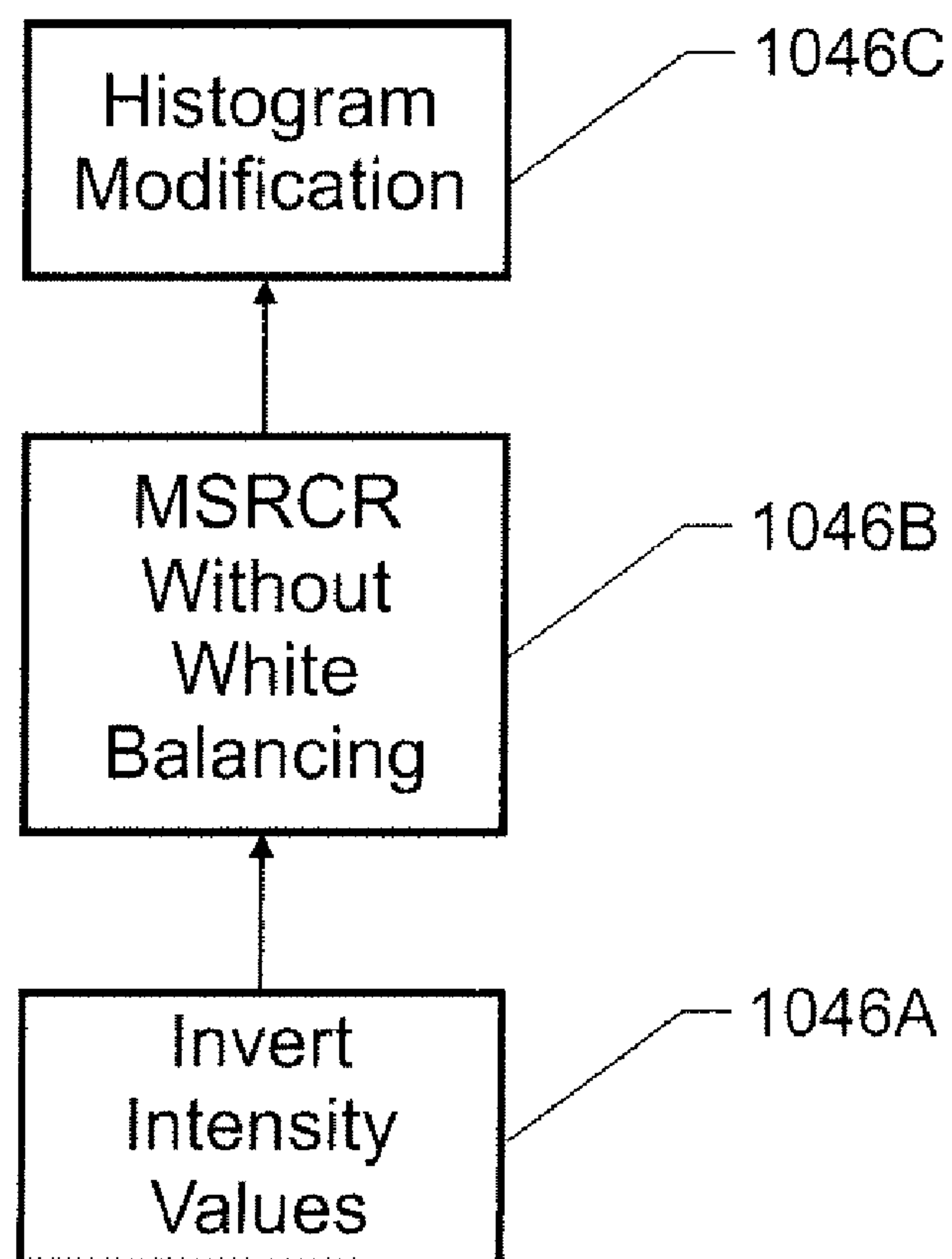


FIG. 4

SMART IMAGE ENHANCEMENT PROCESS

ORIGIN OF THE INVENTION

This invention was made in part by employees of the United States Government and may be manufactured and used by or for the Government of the United States of America for governmental purposes without the payment of any royalties thereon or therefor.

BACKGROUND OF THE INVENTION

1. Field of the Invention

This invention relates to digital image processing. More specifically, the invention is a method for optimizing the visual quality of any digital image based on contrast, lightness and sharpness measures thereof.

2. Description of the Related Art

The image of a scene captured by imaging equipment is affected by the environments between the imaging equipment and the scene. For example, if the environment is a low-light environment, image features can be lost due to low contrast and low lightness. If the environment is turbid (e.g., foggy, smoke, rain, snow, murky water, etc.), there is very little contrast in an image. The combination of low light and a turbid environment makes image feature detection even more difficult.

Conventional image processing approaches are typically designed to cope with one of these environments but not the effects caused by combinations of these environments. Further, conventional image processing approaches are either manual methods or passive automatic image enhancement methods that do not evaluate and adapt to visual qualities. The manual methods require significant operator training, are time consuming and expensive, and/or are inconvenient for some applications. Existing automatic methods include auto level enhancement, histogram enhancement, and retinex image processing as disclosed in U.S. Pat. Nos. 5,991,456, 6,834,125 and 6,842,543.

Auto level or "fixed gain" enhancement does not work with wide dynamic range images as saturation occurs. Histogram enhancement performance is unpredictable. Retinex image processing performs relatively well in terms of contrast and lightness enhancement across wide ranging imaging conditions. However, the effectiveness of retinex image processing is reduced for narrow dynamic range images generated in low-light or turbid environments. Finally, each of the automatic enhancement approaches operates on all images even when some images are visually acceptable. From a processing cost perspective, this is inefficient.

SUMMARY OF THE INVENTION

Accordingly, it is an object of the present invention to provide a method of image processing that effectively and efficiently enhances images that are unsatisfactory.

Another object of the present invention is to provide an automatic method of image enhancement.

Still another object of the present invention is to provide an image enhancement method that achieves pattern constancy for a variety of low light, low-contrast, and/or turbid imaging environments.

Other objects and advantages of the present invention will become more obvious hereinafter in the specification and drawings.

In accordance with the present invention, a method of smart image processing is provided. Contrast and lightness

measures are computed for a digital image and used to first classify the image as being one of non-turbid and turbid. If a turbid image, the original image is enhanced to generate a first enhanced image. If a non-turbid image, the original image is then classified as having one of a good contrast/lightness score and a poor contrast/lightness score based on the contrast and lightness measures. The non-turbid image is enhanced when a poor contrast/lightness score is associated therewith. As a result, a second enhanced image is generated. A revised contrast measure and revised lightness measure are computed for the second enhanced image. This second enhanced image is then classified as having one of a good contrast/lightness score and a poor contrast/lightness score based on the revised contrast and lightness measures. When the second enhanced image has a poor contrast/lightness score associated therewith, this image is enhanced so that a third enhanced image is generated. A sharpness measure is computed for one image that is selected from (i) the non-turbid image, the first enhanced image, (iii) the second enhanced image when a good contrast/lightness score is associated therewith, and (iv) the third enhanced image. This selected image is then classified as having one of a sharp image score and a not-sharp image score based on the sharpness measure. The selected image having a not-sharp score associated therewith is then sharpened to generate a sharpened image. A contrast measure and revised sharpness measure are then computed for the sharpened image. The sharpened image is classified as having one of a sharp image score and a not-sharp image score based on the contrast measure associated with the sharpened image. The final image is selected from (i) the selected image having the sharp image score, (ii) the sharpened image having the sharp image score, and, in some instances, (iii) the sharpened image having the not-sharp image score.

BRIEF DESCRIPTION OF THE DRAWINGS

FIG. 1 is a flow diagram of an image processing method in accordance with the present invention;

FIG. 2 is a flow diagram of turbid image detection and enhancement processing in accordance with an embodiment of the present invention;

FIG. 3 is a flow diagram of an embodiment of image enhancement for a low-contrast imaging environment, and

FIG. 4 is a flow diagram of an embodiment of image enhancement for a low-contrast and low-light imaging environment.

DETAILED DESCRIPTION OF THE INVENTION

Referring now to the drawings and more particularly to FIG. 1, a flow diagram of an image processing method in accordance with the present invention is shown. The method operates on digital image data that can be captured by digital imaging equipment, or analog imaging equipment coupled to an analog-to-digital converter. Accordingly, the choice of imaging equipment is not a limitation of the present invention. In addition, the digital image data processed in accordance with the present invention can be a single still image or a single frame from a video data stream. Still further, the method described herein can be applied as post-processing to archived image data, or can be incorporated into imaging equipment to provide real-time image (i.e., still or video image) enhancement.

In accordance with the present invention, a raw incoming image **100** in digital form will be provided. Image **100** is a single frame of an image and is defined by an $N \times M$ array of pixels with each pixel having an intensity value associated

3

therewith as would be well understood in the art. As mentioned above, image **100** can be a still image or a single frame from a video stream as processing will be the same in either case. In general, image **100** will be evaluated in accordance with a number of novel “measures” of visual quality, and then enhanced (if necessary) predicated on the computed measures. The process is automatic and adapts to all imaging environments. Thus, the present invention can be viewed as a “visual servo control” process.

The first measures are computed for image **100** at step **102**. These first measures are a contrast measure “C” and lightness measure “L”. While the determination of these measures will be described further below, it is sufficient at this point in the description to say that these two measures define the contrast and lightness of image **100** relative to predetermined/acceptable criteria.

Image **100** is then evaluated in terms of its turbidity at step **104**. In general and as referred to herein, a “turbid” image is one exhibiting low contrast due to (i) image environment conditions such as fog, haze, smoke, rain, snow, cloudy or muddy water, etc., that cloud the medium between the scene and the imaging device, (ii) insufficient light at the time of image capture as is the case during the low-light times of dawn or dusk, or (iii) severe underexposure errors during image acquisition.

Step **104** utilizes the computations of step **102** to perform one or more evaluations of image **100** to determine if image **100** is a turbid image. If image **100** is determined to be turbid, the image is enhanced at step **106**. Details of turbid-image determination step **104** and an exemplary enhancement process **106** will be described in detail further below. If generated, the enhanced turbid image is supplied to a sharpness measure computation step **118**.

If image **100** is not turbid, processing of image **100** proceeds to step **108** where a merged contrast and lightness classification is performed using contrast measure C and lightness measure L. At this point in the description, it is sufficient to say that step **108** classifies image **100** as being either GOOD or POOR in terms of the present invention’s merged contrast/lightness evaluation that will be described further below. If image **100** is classified as GOOD, image **100** is provided to sharpness measure computation step **118**.

If image **100** is classified as being POOR in terms of its contrast/lightness evaluation, then image **100** is enhanced at step **110**. For example, enhancement step **110** can utilize retinex processing techniques disclosed by one or more of U.S. Pat. Nos. 5,991,456, 6,334,125 and 6,842,543, the contents of which are each hereby incorporated by reference in their entirety. Should enhancement step **110** utilize the processing techniques disclosed by all three of these patents, enhancement step **110** is said to employ a “multi-scale retinex with color restoration” (MSRCR) process as it is known in the art. However, it is also to be understood that step **110** is not limited to the MSRCR process as other or additional image enhancement techniques could be used without departing from the scope of the present invention.

The resulting enhanced image from step **110** is re-evaluated in terms of contrast and lightness. More specifically, the enhanced image from step **110** has contrast and lightness measures associated therewith computed at step **112** where such computations are the same ones used in step **102**. The computed contrast measure “C_E” and lightness measure “L_E” for the enhanced image are then utilized in a merged fashion by classification step **114**. Classification determination processing at step **114** is the same as that performed at step **108**. As a result of step **114**, the enhanced image from step **110** is

4

classified as being either GOOD or POOR in terms of the present invention’s merged contrast/lightness evaluation.

If step **114** classifies the enhanced image as POOR, the enhanced image (from step **110**) is further enhanced (e.g., by auto level processing, histogram modification, etc.) at step **116**. One of the enhanced image classified as GOOD or the re-enhanced image from step **116** is provided to a sharpness measure computation step **118**.

As a result of the above-described processing, one “image” is provided to step **118** for computation of a sharpness measure associated therewith. The image provided to step **118** can be the original image **100** (i.e., a GOOD classification from step **108**), an enhanced turbid image from step **106**, an enhanced original image classified as GOOD at step **114**, or a re-enhanced image from step **116**. Regardless of the “image” provided thereto, step **118** generates a sharpness measure therefrom and provides same to a classification step **120** that evaluates the sharpness of the currently-processed image in terms of it sharpness. Once again, while details of step **120** will be provided further below, it is sufficient at this point to say that step **120** identifies the currently-processed image as SHARP or NOT SHARP.

An image classified as SHARP becomes an outgoing image **200** requiring no additional processing. An image classified as NOT SHARP is sharpened at step **122** in accordance with any one or more image sharpening techniques, a variety of which are well known in the art. For reasons that will become clearer below, the sharpened image from step **122** has a contrast measure associated therewith computed at step **124**. This computation is the same as that used in steps **102** and **112**. The sharpened image is provided to step **124** where a new contrast measure is computed. This computation is the same as that used in steps **102** and **112**. Classification step **120** is then repeated using the new sharpness measure (step **118**) and contrast measure (step **124**) computed for the sharpened image.

When testing the present invention, it was discovered that the sharpening “loop” does not provide image improvements after a few passes. Accordingly, classification step **120** can include a counter operation to limit the number of passes therethrough thereby preventing “infinite loop” processing. In this case, outgoing image **200** could also be defined by a sharpened image that is still classified as NOT SHARP by the criteria embodied in step **120**. By making classification step **120** a “count-limited” classification step, the processing method will be guaranteed to generate outgoing image **200** with efficiency.

The various “measure” computations and turbid image detection/processing will now be described. It will be assumed that the image being evaluated has multiple spectral channels (e.g., colors, bands, etc.). Contrast and lightness measures are determined in the following fashion. The image being evaluated is divided evenly into “R” non-overlapping blocks or regions. For each j-th spectral channel of each k-th region, the mean and standard deviation are determined. Then, the maximum spectral mean and maximum spectral standard deviation are selected for further processing. That is, for each k-th region, the mean μ_k selected for further processing is

$$\mu_k = \max(\mu_j), j=1, \dots, J \quad (1)$$

and the standard deviation σ_k selected for further processing is

$$\sigma_k = \max(\sigma_j), j=1, \dots, J \quad (2)$$

5

where J is the number of spectral channels. Thus, μ_k and σ_k are indicative of perceived lightness and contrast, respectively, of the image.

The next step in determining the contrast measure C is to classify each k -th region as having good or poor contrast. A region's contrast is good when

$$\sigma_k \geq K_1 \quad (3)$$

where K_1 is a predetermined canonical value. The contrast measure C is the number of regions having good contrast divided by the total number of regions R . The first step in determining the lightness measure L is to determine which regions having poor contrast have good lightness. A region's lightness is good when

$$\mu_k \geq K_2 \quad (4)$$

where K_2 is a predetermined threshold value. The lightness measure L is the number of regions satisfying equation (4) divided by the total number of regions R .

Contrast and lightness classification steps **108** and **114** perform a merged contrast/lightness classification in accordance with the following logic:

$$\text{If } C \geq K_3 \text{ AND } (C+L) \geq K_4, \quad (5)$$

then classify the image as having GOOD lightness and contrast; else, classify the image having POOR lightness and contrast.

Here, the constants K_3 and K_4 are predetermined via experimentation.

The sharpness measure computation begins by convolving the image (provided to step **118**) with a smallest Difference-of-Gaussian kernel in accordance with methods disclosed by D. Jobson in "Spatial Vision Procession: From the Optical Image to the Symbolic Structures of Contour Information," NASA Technical Paper No. 2838, November, 1988, and F. Huck et al. in "Visual Communication: An Information Theory Approach," Kluwer Academic Publishers, 1997, p. 145. The resulting matrix of image pixels $S(x,y)$ is then half-rectified to identify a matrix $S'(x,y)$ of all non-negative-intensity-value pixels or

$$S'(x,y) = S(x,y) \geq 0 \quad (6)$$

Next, each non-negative-intensity-value pixel $S'(x,y)$ is classified as SHARP or NOT SHARP in accordance with the following relationship:

$$\text{If } S'(x,y) \geq K_5, \quad (7)$$

then classify the pixel at (x,y) as SHARP; else, classify the pixel at (x,y) as UNSHARP.

Here, the constant K_5 is an experimentally determined canonical constant. The total number of pixels classified as SHARP for an image is counted and is designated herein as " S_p ". The raw global sharpness measure " S " is the number of sharp pixels of S_p divided by the total number of pixels in the image.

Sharpness classification step **120** uses the sharpness measure S to classify an entire image as SHARP or NOT SHARP in accordance with the logic

$$\text{If } S \geq T, \quad (8)$$

then classify the image SHARP; else, classify the image as NOT SHARP.

Here, T is an experimentally determined threshold of the form

$$T = (C/C_T)K_6 \quad (9)$$

where C is the contrast measure (from step **102**, step **112**, or step **124**), C_T is a canonical constant determined For mini-

6

num GOOD contrast scoring images, and K_6 is an experimentally-determined constant.

Turbid image detection and processing in accordance with the present invention will now be described with reference to FIGS. **2-4**. Referring first to FIG. **2**, the original image **100** is evaluated at step **1040** to determine if very low contrast conditions exist across the entire image. Such conditions are indicative of a foggy or smoky environment. More specifically, step **1040** compares the sum of the regional standard deviations μ_K (from equation (1)) to a predetermined threshold value K_7 according to the following relationship

$$\text{If } \sum_{k=1}^R \sigma_k \leq K_7, \quad (10)$$

then the original image is FOGGY; else, the image is NOT FOGGY.

If the original image **100** is FOGGY, it is enhanced in step **1042**. For example, step **1042** can be realized by the process illustrated in FIG. **3** where the original image **100** is first processed at step **1042A** in accordance with a modified retinex process. That is, the modified retinex process is deadened by the processing techniques disclosed in just two of the previously-cited U.S. patents (i.e., U.S. Pat. Nos. 5,991,456 and 6,834,125). Thus, step **1042A** can be said to employ an MSRCR process with the white balancing operation (i.e., disclosed in U.S. Pat. No. 6,842,543) turned off. In foggy images, the brightness is high. Therefore, the original foggy image tends to overwhelm the white balance operation in a full MSRCR process. To counteract this, the white balance operation is turned off in order to allow the retinex processing to impact the original image. The enhanced FOGGY image is further processed by a conventional histogram modification at step **1042B**.

Referring again to FIG. **2**, if the original image **100** is determined to be NOT FOGGY, it is then checked at step **1044** for the combination of low contrast and low light conditions that would typically exist at either dawn or dusk. Note that dawn and dusk are the times of day when humans experience the greatest visibility deficiency due to the prevalence of blue light. Specifically, step **1044** performs the following logic using the contrast C and lightness measure L from step **102** as follows:

$$\text{If } (C < K_9) \text{ AND } (L < K_{10}), \quad (11)$$

then a DAWN/DUSK condition exists; else, NOT DAWN/DUSK. Here, K_9 is a preset contrast measure threshold and K_{10} is a preset lightness measure threshold indicative of dawn/dusk conditions.

If a DAWN/DUSK condition is indicated, the original image **100** is enhanced at step **1046**. For example, step **1046** can be realized by the process illustrated in FIG. **4** where the original image **100** first has its pixel intensity values inverted at step **1046A**. The inverted-value image is then enhanced at step **1046B** by an MSRCR process with the white balancing operations turned off, i.e., the same as process step **1042A**. The pixel intensity values are inverted prior to MSRCR processing to allow the log operator (in the MSRCR process) to accentuate the details in the bright regions of the image. The enhanced DAWN/DUSK image is further processed by a conventional histogram modification at step **1046C**.

Referring again to FIG. **2**, if the original image **100** is determined to be not DAWN/DUSK, it is then checked at step **1048** for the combination of low contrast with light conditions that are bright enough to not trigger DAWN/DUSK, but too

7

dark for adequate handling by enhancement step **1042**. This condition would typically exist when there is very heavy fog or haze in daylight. Specifically, step **1048** performs the following logic using the contrast measure C and lightness measure L from step **102** as follows:

$$\text{If } (C < K_9) \text{ AND } (L \leq K_{11}), \quad (12)$$

then VERY HEAVY FOG condition exists; else, NOT VERY HEAVY FOG.

Here, K_{11} is a preset lightness measure value satisfying $K_{10} < L \leq K_{11}$.

If the original image **100** is VERY HEAVY FOG, it is enhanced at step **1050** which can be realized by the same “MSRCR-with-white-balancing-turned-off” process described above, followed by a conventional histogram modification (i.e., the same enhancement combination as process steps **1042A** and **1042B**). However, in this case, a different set of canonical gain and offset values is used with the “MSRCR-with-white-balancing-turned-off” process to compensate for the additional poor lightness and contrast. If a NOT VERY HEAVY FOG condition exists, the original image **100** is passed to step **108** for processing as described earlier herein. If any of the turbid image detection/processing produces an enhanced image, that enhanced image is provided to sharpness measure computation step **118**.

The advantages of the present invention are numerous. A wide variety of image environment conditions are evaluated with the optimum image enhancement processes) being selected/implemented to optimize image contrast, lightness and sharpness. The process provides for variations in visual preferences by selection of threshold constants used throughout the process. Tests of the present invention on a wide variety of imaging conditions have yielded pattern constancy across the various conditions. In terms of image processing systems/methods, “pattern constancy” refers to a system/method’s ability to extract a pattern from the image of a scene that is stable over wide ranging extraneous variations in scene lighting conditions, atmospheric turbidity, and exposure errors present in the image acquisition device. Thus, the present invention would be particularly useful in aviation to provide a pilot with (i) good and consistent images regardless of the visibility conditions, and (ii) stable pattern information for use in in-flight computer pattern processing and pattern recognition systems.

Although the invention has been described relative to a specific embodiment thereof, there are numerous variations and modifications that will be readily apparent to those skilled in the art in light of the above teachings. While the present invention provides an automatic “poor” image detection/enhancement process, aspects of the present invention could be used by themselves. For example, the novel contrast, lightness and/or sharpness measures could be utilized in other image classification/processing schemes. The turbid image detection and/or enhancement schemes could be used in a “stand alone” fashion. For example, the FOGGY/NOT FOGGY detection scheme could be used for aviation and underwater imaging to provide a warning or announcement that poor visibility conditions are approaching. It is therefore to be understood that, within the scope of the appended claims, the invention may be practiced other than as specifically described.

What is claimed as new and desired to be secured by Letters Patent of the United States is:

1. A method of image processing, comprising the steps of:
 - providing a digital image;
 - dividing said digital image into non-overlapping regions;

8

computing a standard deviation for each spectral channel of each of said regions wherein a plurality of standard deviations are computed for each of said regions, and wherein a regional standard deviation is defined for each of said regions by a maximum of said plurality of standard deviations associated therewith;

classifying each of said regions as having one of a good contrast score and a poor contrast score based on said regional standard deviation associated therewith, wherein said contrast measure is defined by a ratio of said regions having said good contrast score relative to a total number of said regions in said digital image;

computing a mean for each spectral channel of said regions having a poor contrast score wherein a plurality of means are computed, and wherein a regional mean is defined for each of said regions having a poor contrast score by a maximum of said plurality of means associated therewith;

classifying each of said regions having poor contrast score as having one of a good lightness score and a poor lightness score based on said regional mean associated therewith, wherein said lightness measure is defined by a ratio of said regions having said good lightness score relative to a total number of said regions in said digital image;

classifying said digital image as being one of non-turbid and turbid based on at least said contrast measure, wherein said digital image is respectively identified as being one of a non-turbid image and a turbid image;

enhancing said turbid image, wherein a first enhanced image is generated;

classifying said non-turbid image as having one of a good contrast/lightness score and a poor contrast/lightness score based on said contrast measure and said lightness measure;

enhancing said non-turbid image when said poor contrast/lightness score is associated therewith, wherein a second enhanced image is generated;

computing a revised contrast measure and a revised lightness measure for said second enhanced image;

classifying said second enhanced image as having one of a good contrast/lightness score and a poor contrast/lightness score based on said revised contrast measure and said revised lightness measure;

enhancing said second enhanced image when said poor contrast/lightness score is associated therewith, wherein a third enhanced image is generated;

computing a sharpness measure for one image selected from the group consisting of (i) said non-turbid image, (ii) said first enhanced image, (iii) said second enhanced image when said good contrast/lightness score is associated therewith, and (iv) said third enhanced image;

classifying said one image as having one of a sharp image score and a not-sharp image score based on said sharpness measure;

sharpening said one image when said not-sharp score is associated therewith, wherein a sharpened image is generated;

computing a contrast measure and a revised sharpness measure for said sharpened image; and

classifying said sharpened image as having one of a sharp image score and a not-sharp image score based on said contrast measure associated with said sharpened image, wherein a final image is selected from the group consisting of (i) said one image having said sharp image score,

9

(ii) said sharpened image having said sharp image score, and (iii) said sharpened image having said not-sharp image score.

2. A method according to claim 1, wherein a plurality of regional standard deviations are defined for said digital image, and wherein said step of classifying said digital image includes the step of comparing a sum of said plurality of regional standard deviations to a threshold in order to classify said digital image as being one of non-turbid and turbid.

3. A method according to claim 1, wherein said step of classifying said digital image includes the steps of:

comparing said contrast measure to a first threshold; and comparing said lightness measure to a second threshold and a third threshold, said second threshold being less than said third threshold, wherein a first turbid classification is defined when said contrast measure is less than said first threshold and said lightness measure is less than said second threshold, and wherein a second turbid classification is defined when said contrast measure is less than said first threshold and said lightness measure is greater than said second threshold but less than said third threshold.

4. A method according to claim 3 wherein, when said first turbid classification is defined, said method further comprises the step of inverting intensity values associated with said turbid image prior to said step of enhancing said turbid image.

5. A method according to claim 1, wherein said step of computing said sharpness measure comprises the steps of:

10

convolving said one image with a smallest Difference-of-Gaussian kernel to generate a sharpness image; identifying non-negative-intensity pixels in said sharpness image; and

classifying each of said non-negative-intensity pixels as being one of sharp and not-sharp based on a comparison of each of said non-negative-intensity pixels to a predetermined constants wherein said sharpness measure is defined by a ratio of a number of said non-negative-intensity pixels so-classified as sharp to a total number of pixels in said digital image.

6. A method according to claim 5, wherein said step of identifying comprises the step of half-rectifying said sharpness image.

7. A method according to claim 1, wherein said step of enhancing said non-turbid image comprises the step of applying a multi-scale-retinex-with-color-restoration process to said non-turbid image.

8. A method according to claim 1, wherein said step of enhancing said second enhanced image comprises the step of applying a histogram operation to said second enhanced image.

9. A method according to claim 1, wherein said step of enhancing said turbid image includes the step of applying a multi-scale-retinex-with-color-restoration-and-without-white-balancing process to said turbid image.

* * * * *